



Papilio

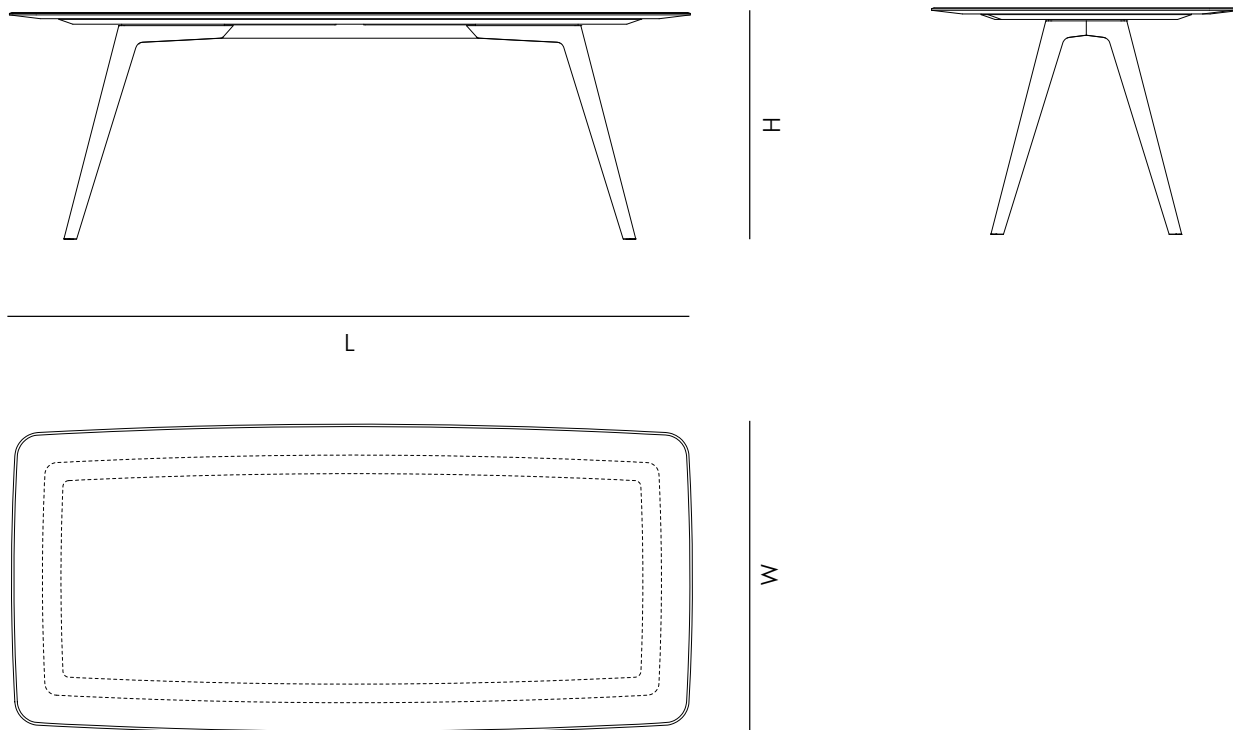
Powerfully expressive, Papilio draws inspiration from the lightness of a flap of a butterfly's wings. Curved lines and thin edges reinterpret the essence of natural materials with subtle, airy elegance. The harmony of butterfly wings is evoked through the shape and colors of the extraordinary pattern of selected natural stones, masterfully crafted to achieve maximum lightness.

The most advanced techniques in metal folding allows for the creation of incredibly light yet sturdy legs that, raising from the ground with a slight tilt, are able to support large and heavy table tops with great stability. With an overall weight of a mere 20 lbs, the 4 legs can be stacked to significantly reduce the shipping volume.

Handcrafted in Italy

ETAMORPH

ETAMORPH LLC | info@etamorph.com | www.etamorph.com | Copyright © 2023



DIMENSIONS

| | |
|---------------|--|
| PPL170 | 67 L x 35.5 W x 28.75 H (in) 1700 L x 900 W x 730 H (mm) |
| PPL220 | 86.5 L x 39.5 W x 28.75 H (in) 2200 L x 1000 W x 730 H (mm) |
| PPL280 | 110.25 L x 39.5 W x 28.75 H (in) 2800 L x 1000 W x 730 H (mm) |

PPLCST

RECTANGULAR or ELLIPTICAL MARBLE TOP

| | |
|------------|-------------------|
| Max length | 110.25" (2800 mm) |
| Max width | 70.75" (1800 mm) |

RECTANGULAR or ELLIPTICAL WOOD TOP

| | |
|------------|------------------|
| Max length | 126" (3200 mm) |
| Max width | 70.75" (1800 mm) |

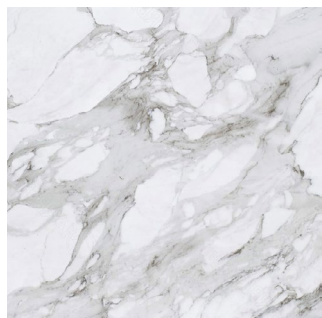
MATERIALS

| | |
|------------------|---|
| TABLE TOP | 3/4" (20 mm) Natural Stone 1 1/4" (70 mm) solid wood (see materials page) |
| LEGS | 1/8" (3mm) Folded Steel (see materials page) |

ETAMORPH

ETAMORPH LLC | info@etamorph.com | www.etamorph.com | Copyright © 2023

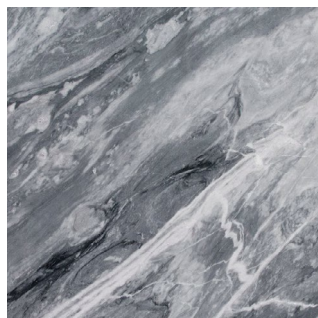
TABLE TOP MATERIALS



Calacatta Gold



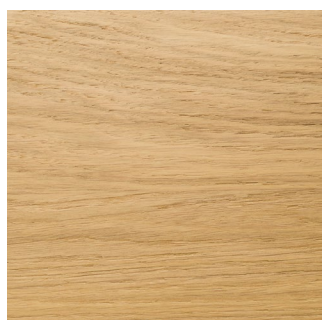
Nero Marquina



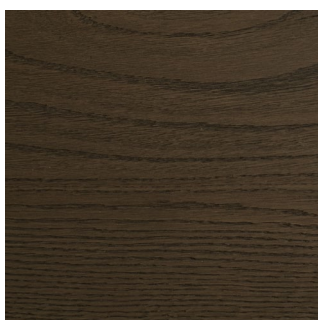
Apuan Grey



Verde Alpi



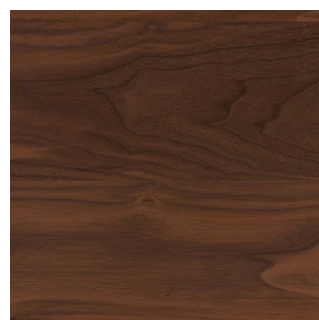
European Oak
Natural or Sanded



Stained Oak
Dark Brown

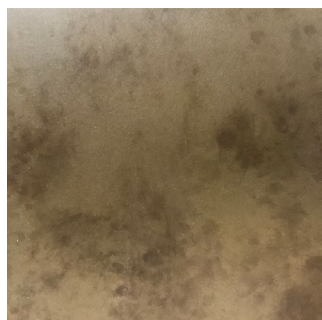


Stained Oak
Charcoal



Walnut
Natural or Light

LEGS MATERIALS



Steel
Delabre Bronze



Steel
Black Coating

ETAMORPH

ETAMORPH LLC | info@etamorph.com | www.etamorph.com | Copyright © 2023